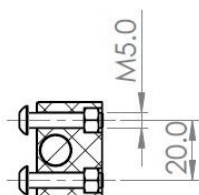
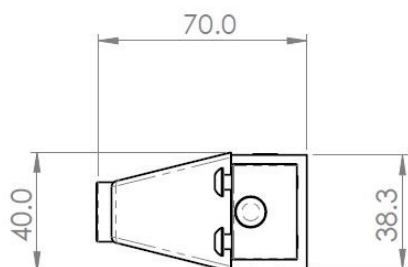
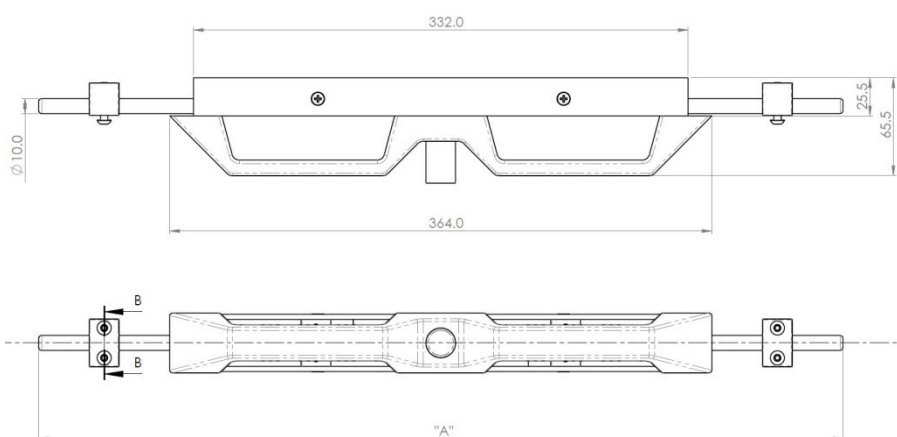
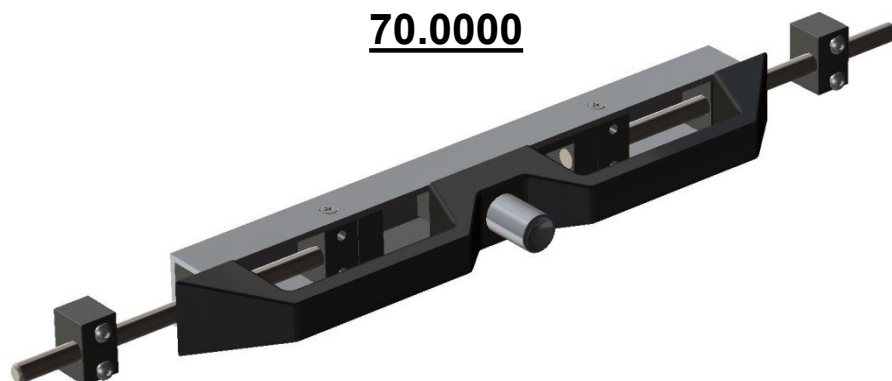


**70.0000**



Configuration Table

Part Number	Closed Length "A"	Extension Length	Load Per Pair (kg)
70.0000.0540	540	540	500
70.0000.1040	1040	1040	500
70.0000.1540	1540	1540	500
70.0000.2040	2040	2040	500

Options: Handles are available in Black and Yellow



### SECTION B-B

We recommend use the major axis, do not dismantle the slide! The maximum safe load is given for a fully extended pair of slides, mounted on the major axis, with a load spread uniformly along the inner beam.

### Material:

Handle - Cast alloy 6060 T6. Power coated matt paint finish.  
Bars – Stainless steel grade 304  
Plastic parts – Polyamide, 30% glass fibre reinforced  
Plunger, casing & end stops – Machined 6060 T6 Aluminium  
Springs – 304 Stainless steel

*'UK Company, Global Reach'*